

TIBCON has more than 25 years of experience in manufacturing capacitors for Fan applications. TIBCON Fan Capacitors are widely known for their reliability and consistent performance. They are the first choice of the best fan manufacturers in India and abroad

Over the years, TIBCON has continuously engineered and improved the capacitors to make them 100% reliable and long lasting. TIBCON capacitors ensure that the fan speed is maintained consistent through out its life, thereby earning customer confidence through customer satisfaction. Our state of the art manufacturing line and stringent quality control systems ensure 100% reliability. We offer a wide range of Fan Capacitors including Dry Type, Oil Filled and Box Type Capacitors.

All of the above are designed to have a minimum capacitance droppage and minimum failure rate. As a result, our capacitors are a part of the best brands of fans sold in India.

TIBCON ADVANTAGE

Characteristic Features

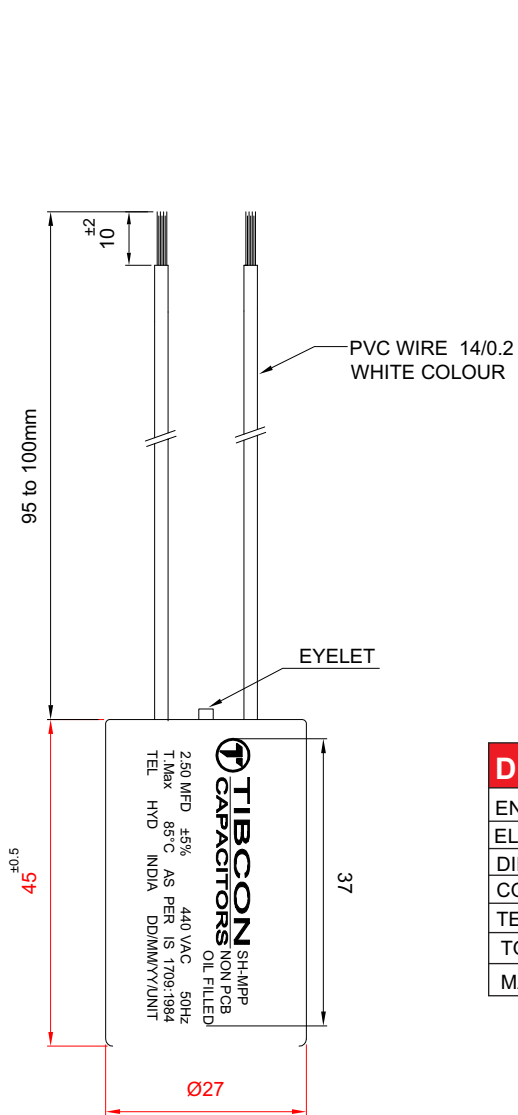
- Made with special technology metalized film that extends the life of the capacitors.
- Can operate with the same efficiency over a wide range of temperatures and humidity.
- Manufacturing process of the capacitor is tailor made to suit the requirements of the fans.
- Low internal power losses conserve energy
- Non PCB Encapsulation
- ECO Friendly
- High Insulation Resistance.



Tibrewala Electronics Limited

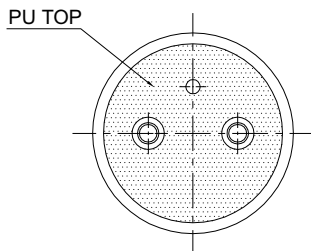
Tibrewala Electronics Limited, Hyderabad, is one of India's leading Capacitor manufacturer with ISO

9001-2008 certification. We are equipped with the latest and world class state-of-the-art manufacturing plant.



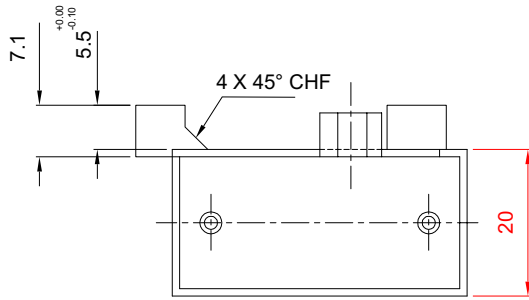
DETAIL SPECIFICATION

ENCLOSURE	: ALUMINIUM CAN
ELECTRODE	: METALLIZED PP FILM
DIELECTRIC	: POLYPROPYLENE FILM
CONSTRUCTION	: OIL FILLED
TERMINATION	: PVC INSULATED MULTISTRAND COPPER WIRE
TOP SEALING	: LEAK PROOF
MARKING	: AS PER PRINTING DETAILS

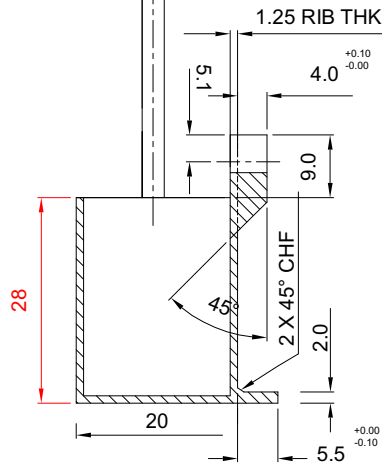
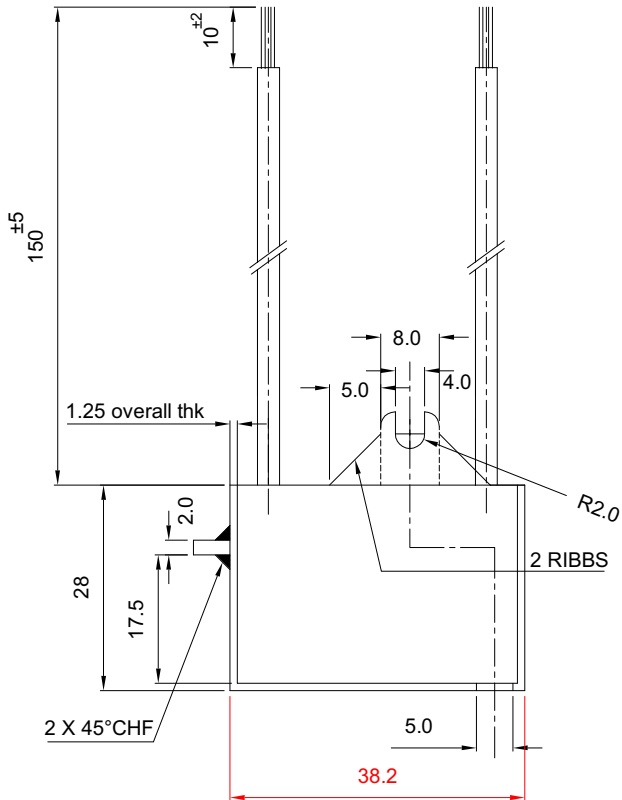


TIBCON BRAND

S.No.	(*) MFD	Can Size (ØDxHt)
1	2.25	27 x 45
2	2.50	27 x 45
3	3.15	27 x 52
4	3.50	27 x 52
5	4.00	27 x 52

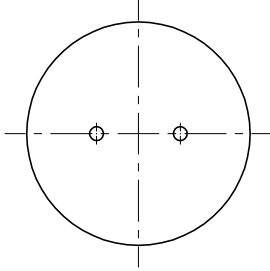
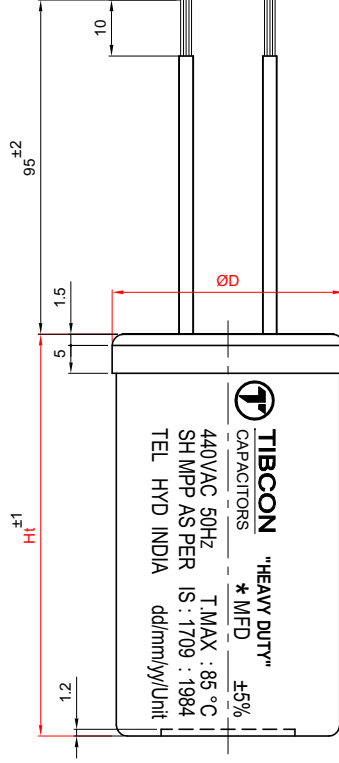
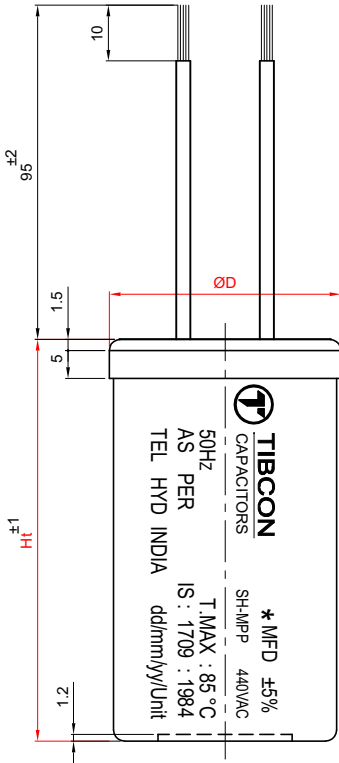


DETAIL SPECIFICATION	
ENCLOSURE	: P.P Box
ELECTRODE	: METALLIZED PP FILM
DIELECTRIC	: POLYPROPYLENE FILM
CONSTRUCTION	: DRY TYPE
TERMINAL	: PVC INSULATED MULTISTRAND COPPER WIRE
MARKING	: AS PER PRINTING DETAILS

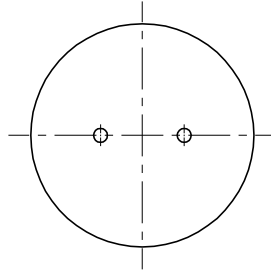


TIBCON BRAND		
S.No.	(★) MFD	Can Size (LxBxH)
1	1.50	38 x 20 x 28
2	2.00	38 x 20 x 28
3	2.25	38 x 20 x 28
4	2.50	38 x 20 x 28
5	3.15	38 x 20 x 28





TIBCON



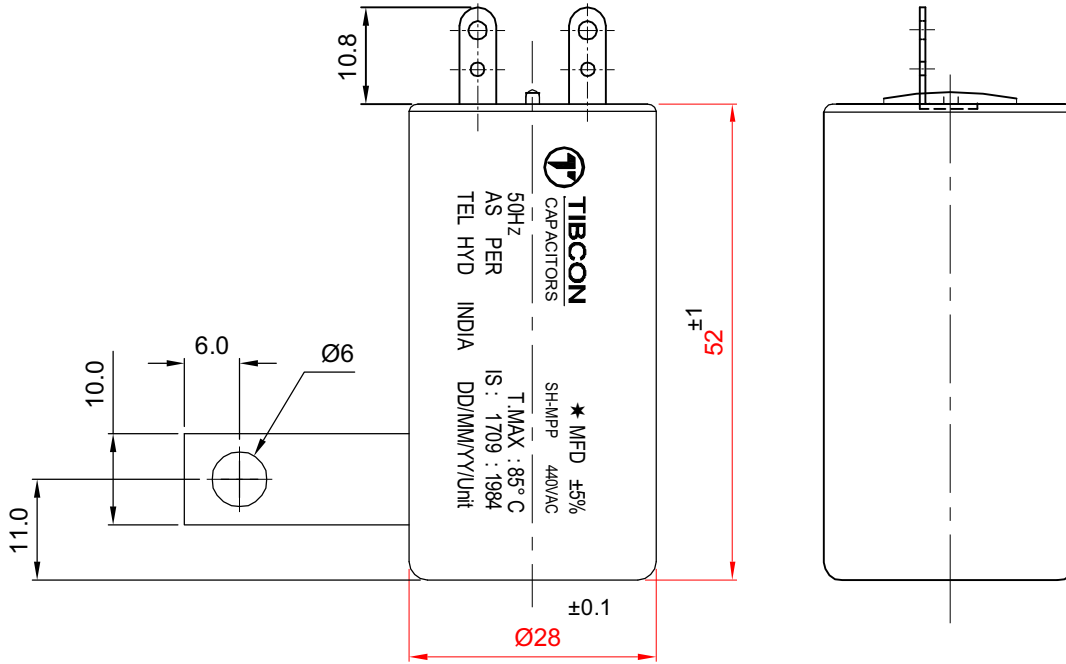
HEAVY DUTY



TIBCON BRAND		
S.No.	(*) MFD	Can Size (ØDxHt)
1	2.00	28 x 52
2	2.25	28 x 52
3	2.50	28 x 52
4	3.15	28 x 52
5	3.50	28 x 52
6	4.00	30 x 55

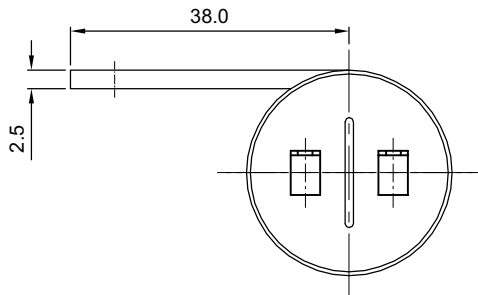
HEAVY DUTY		
S.No.	(*) MFD	Can Size (ØDxH)
1	2.00	28 x 52
2	2.25	28 x 52
3	2.50	28 x 52

DETAIL SPECIFICATION	
ENCLOSURE	: POLYPROPYLENE CAN
METALLIZATION	: METALIZED PP FILM
DIELECTRIC	: POLYPROPYLENE FILM
CONSTRUCTION	: DRY TYPE
TERMINAL	: PVC INSULATED MULTISTRAND COPPER WIRE
MARKING	: AS PER PRINTING DETAILS



DETAIL SPECIFICATION	
ENCLOSURE	: POLYPROPYLENE CAN
ELECTRODE	: METALLIZED PP FILM
DIELECTRIC	: POLYPROPYLENE FILM
CONSTRUCTION	: DRY TYPE
TERMINATION	: PVC INSULATED MULTISTRAND COPPER WIRE
MARKING	: AS PER PRINTING DETAILS

TIBCON BRAND		
S.No.	(*) MFD	Can Size (ØDxHt)
1	2.25	28 x 52
2	2.50	28 x 52



AC FAN CAPACITORS DRY/OIL ALUMINIUM CAN/PLASTIC CAN								APPROVALS: As Per IS : 1709 : 84				
Capacitance (µF)	PART CODE	DIMENSIONS	PART CODE	CONSTRUCTION	PART CODE	VOLTAGE	PART CODE	CASE	PART CODE	TERMINATION	PART CODE	ORDERING CODE
	A	(mm)	B	DRY = 0 / OIL = 1	C	440 = 0	D	ALC = 0 / PPC = 1 PPB = 2 / PPCL = 3	E	WIRE = 0 / PIN = 1	F	FA.A.B.C.D.E.F
2.00	2-00	27 X 45	1	OIL	1	440	1	ALC	0	WIRE	0	FA.2-00.1.1.1.0.0
2.25	2-25	27 X 45	1	OIL	1	440	1	ALC	0	WIRE	0	FA.2-25.1.1.1.0.0
2.50	2-50	27 X 45	1	OIL	1	440	1	ALC	0	WIRE	0	FA.2-50.1.1.1.0.0
2.00	2-00	27 X 52	2	OIL	1	440	1	ALC	0	WIRE	0	FA.2-00.2.1.1.0.0
2.25	2-25	27 X 52	2	OIL	1	440	1	ALC	0	WIRE	0	FA.2-25.2.1.1.0.0
2.50	2-50	27 X 52	2	OIL	1	440	1	ALC	0	WIRE	0	FA.2-50.2.1.1.0.0
3.00	3-00	27 X 52	2	OIL	1	440	1	ALC	0	WIRE	0	FA.3-00.2.1.1.0.0
3.15	3-15	27 X 52	2	OIL	1	440	1	ALC	0	WIRE	0	FA.3-15.2.1.1.0.0
3.50	3-50	27 X 52	2	OIL	1	440	1	ALC	0	WIRE	0	FA.3-50.2.1.1.0.0
4.00	4-00	27 X 52	2	OIL	1	440	1	ALC	0	WIRE	0	FA.4-00.2.1.1.0.0
4.50	4-50	27 X 52	2	OIL	1	440	1	ALC	0	WIRE	0	FA.4-50.2.1.1.0.0
5.00	5-00	27 X 52	2	OIL	1	440	1	ALC	0	WIRE	0	FA.5-00.2.1.1.0.0
6.00	6-00	27 X 52	2	OIL	1	440	1	ALC	0	WIRE	0	FA.6-00.2.1.1.0.0
1.00	1-00	28 X 52	3	DRY	0	440	1	PPC	1	WIRE	0	FA.1-00.3.0.1.1.0
1.25	1-25	28 X 52	3	DRY	0	440	1	PPC	1	WIRE	0	FA.1-25.3.0.1.1.0
1.50	1-50	28 X 52	3	DRY	0	440	1	PPC	1	WIRE	0	FA.1-50.3.0.1.1.0
1.60	1-60	28 X 52	3	DRY	0	440	1	PPC	1	WIRE	0	FA.1-60.3.0.1.1.0
1.70	1-70	28 X 52	3	DRY	0	440	1	PPC	1	WIRE	0	FA.1-70.3.0.1.1.0
1.85	1-85	28 X 52	3	DRY	0	440	1	PPC	1	WIRE	0	FA.1-85.3.0.1.1.0
2.00	2-00	28 X 52	3	DRY	0	440	1	PPC	1	WIRE	0	FA.2-00.3.0.1.1.0
2.25	2-25	28 X 52	3	DRY	0	440	1	PPC	1	WIRE	0	FA.2-25.3.0.1.1.0
2.50	2-50	28 X 52	3	DRY	0	440	1	PPC	1	WIRE	0	FA.2-50.3.0.1.1.0
2.75	2-75	28 X 52	3	DRY	0	440	1	PPC	1	WIRE	0	FA.2-75.3.0.1.1.0
3.00	3-00	28 X 52	3	DRY	0	440	1	PPC	1	WIRE	0	FA.3-00.3.0.1.1.0
3.15	3-15	28 X 52	3	DRY	0	440	1	PPC	1	WIRE	0	FA.3-15.3.0.1.1.0
4.00	4-00	30 X 55	4	DRY	0	440	1	PPC	1	WIRE	0	FA.4-00.4.0.1.1.0
2.00	2-00	25 X 42	5	DRY	0	440	1	PPC	1	WIRE	0	FA.2-00.5.0.1.1.0
2.25	2-25	25 X 42	5	DRY	0	440	1	PPC	1	WIRE	0	FA.2-25.5.0.1.1.0
2.50	2-50	25 X 42	5	DRY	0	440	1	PPC	1	WIRE	0	FA.2-50.5.0.1.1.0
3.15	3-15	25 X 42	5	DRY	0	440	1	PPC	1	WIRE	0	FA.3-15.5.0.1.1.0
4.00	4-00	25 X 42	5	DRY	0	440	1	PPC	1	WIRE	0	FA.4-00.5.0.1.1.0
5.00	5-00	25 X 52	6	DRY	0	440	1	PPC	1	WIRE	0	FA.5-00.6.0.1.1.0
6.00	6-00	25 X 52	6	DRY	0	440	1	PPC	1	WIRE	0	FA.6-00.6.0.1.1.0
2.25	2-25	28 X 52	7	DRY	0	440	1	PPCL	3	PIN	1	FA.2-25.7.0.1.3.1
2.50	2-50	28 X 52	7	DRY	0	440	1	PPCL	3	PIN	1	FA.2-50.7.0.1.3.1
1.50	1-50	38X20X28	8	DRY	0	440	1	PPB	2	WIRE	0	FA.1-50.8.0.1.2.0
2.00	2-00	38X20X28	8	DRY	0	440	1	PPB	2	WIRE	0	FA.2-00.8.0.1.2.0
2.25	2-25	38X20X28	8	DRY	0	440	1	PPB	2	WIRE	0	FA.2-25.8.0.1.2.0
2.50	2-50	38X20X28	8	DRY	0	440	1	PPB	2	WIRE	0	FA.2-50.8.0.1.2.0
3.15	3-15	38X20X28	8	DRY	0	440	1	PPB	2	WIRE	0	FA.3-15.8.0.1.2.0

ABBR : ALC = ALUMINIUM CYLINDRICAL CAN / PPC = POLY PROPLYENE CAN / PPB = POLY PROPLYENE BOX / PPCL = POLY PROPLYENE CAN WITH CLAMP